

Time stamp setup and usage

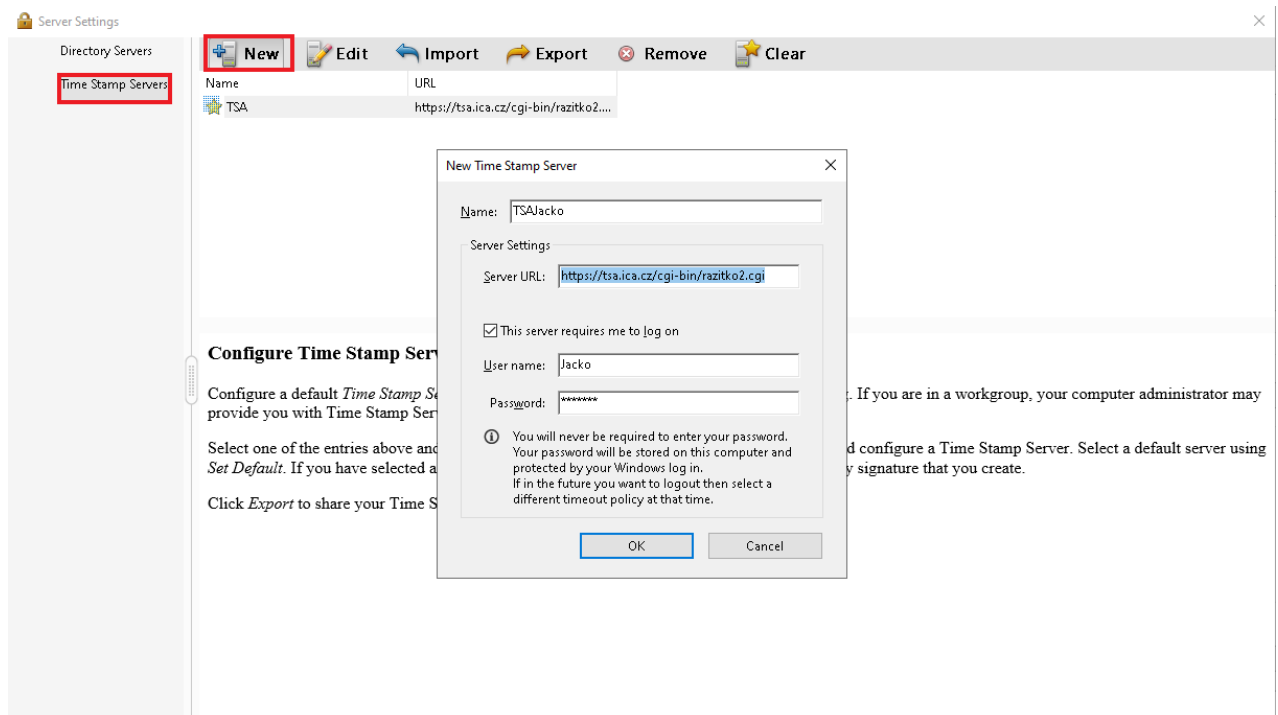
Time Stamp setup

Edit > Preferences > Signatures > Document Timestamping > More...

In the dialog window „Server settings“ in „Time Stamp servers“ choose option „New“.

In the dialog window „New Time Stamp Server“ we already write provided data. See below.

In the case when you are provided with User name and Password choose option „This server requires me to log on“. In the case of certificate authentication we only fill in URL server.

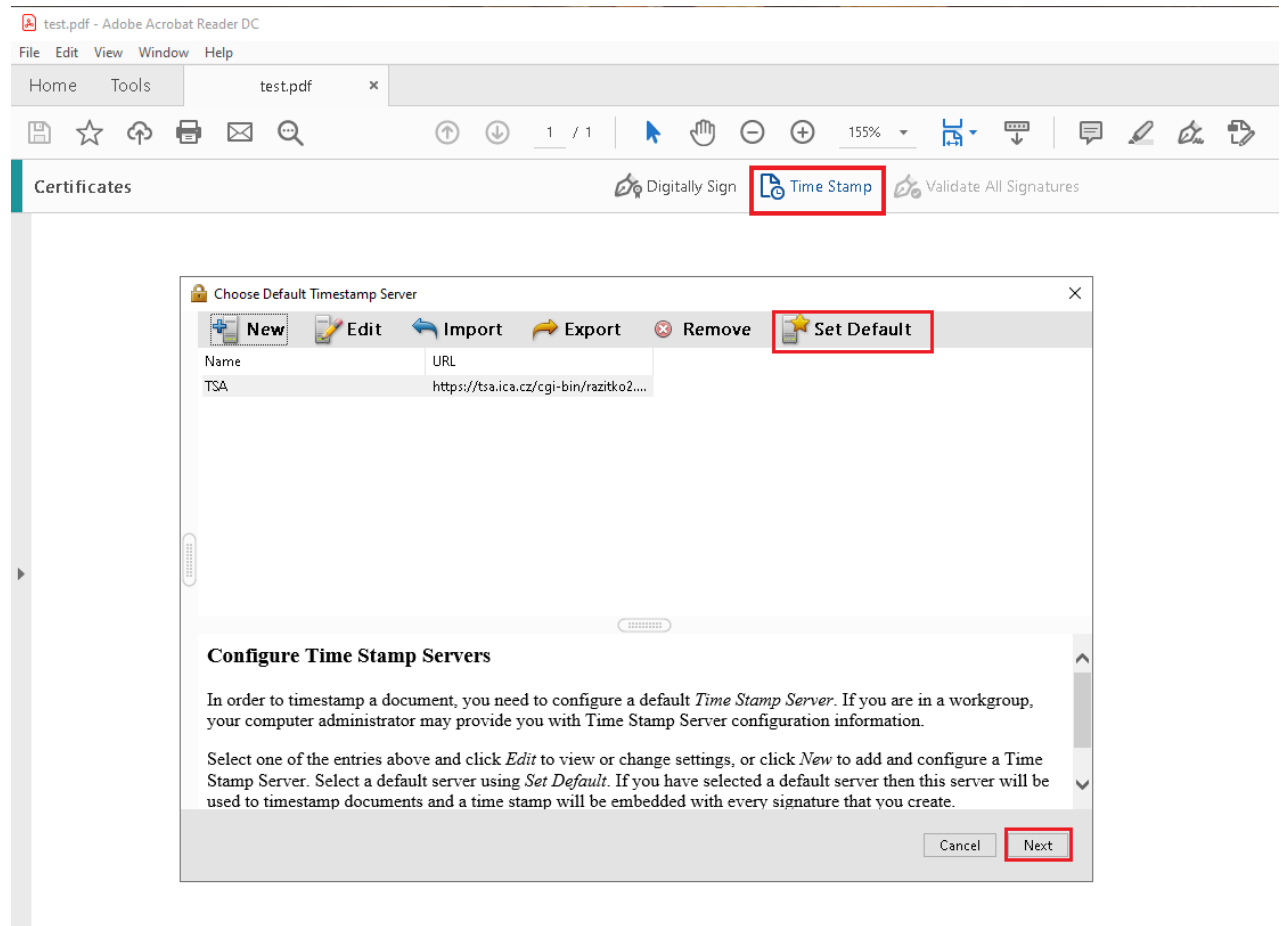


After click on OK button you already set up your Time Stamp Server.

Adding Time Stamp to document

Tools > Certificates > Time Stamp

Dialog windows will be open in which you choose your created Time Stamp server and click on option „Set default“ and option „Next“. After this, Time Stamp will be added and document will be saved.



Note; With this setting the Time Stamp will be added automatically to all documents. After usage of the Timestamp its needed to remove Timestamp option „Set default“ (Edit > Preferences > Signatures > Document Timestamping > More...) with option „Clear“. See below.

Server Settings

Directory Servers

Time Stamp Servers

Name	URL
TSA	https://tsa.ica.cz/cgi-bin/razitko2...

Configure Time Stamp Servers

Configure a default *Time Stamp Server* if you want to embed a trusted time stamp when signing. If you are in a workgroup, your computer administrator may provide you with Time Stamp Server configuration information.

Select one of the entries above and click *Edit* to view or change settings, or click *New* to add and configure a Time Stamp Server. Select a default server using *Set Default*. If you have selected a default server then a time stamp will be embedded with every signature that you create.

Click *Export* to share your Time Stamp Server settings with others.