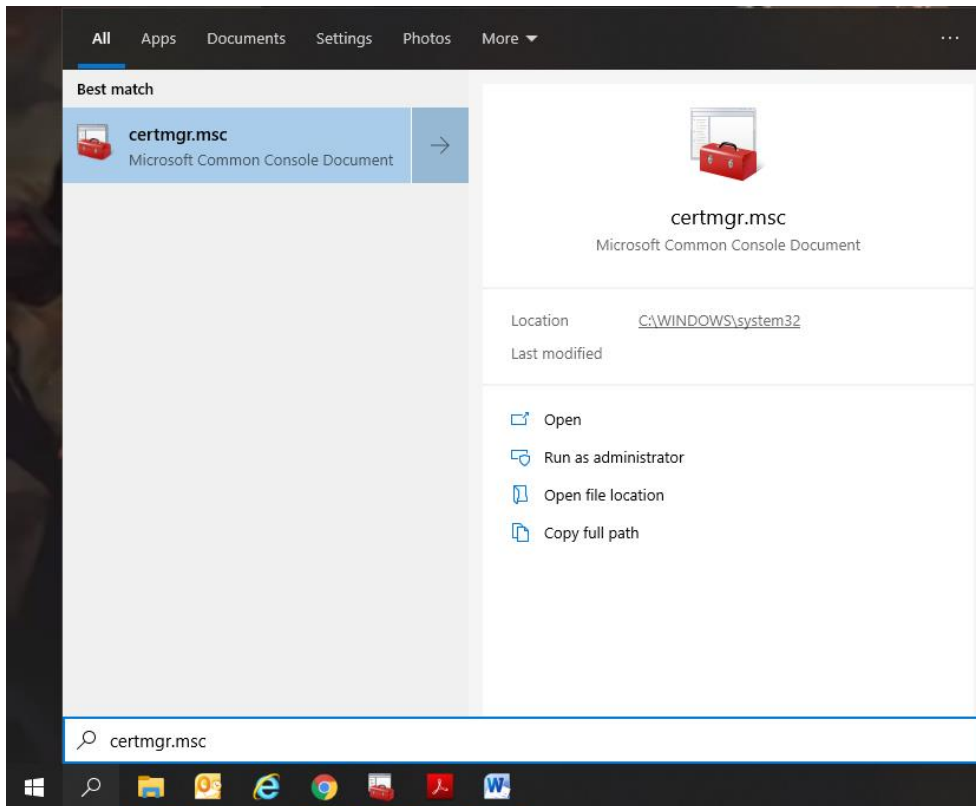
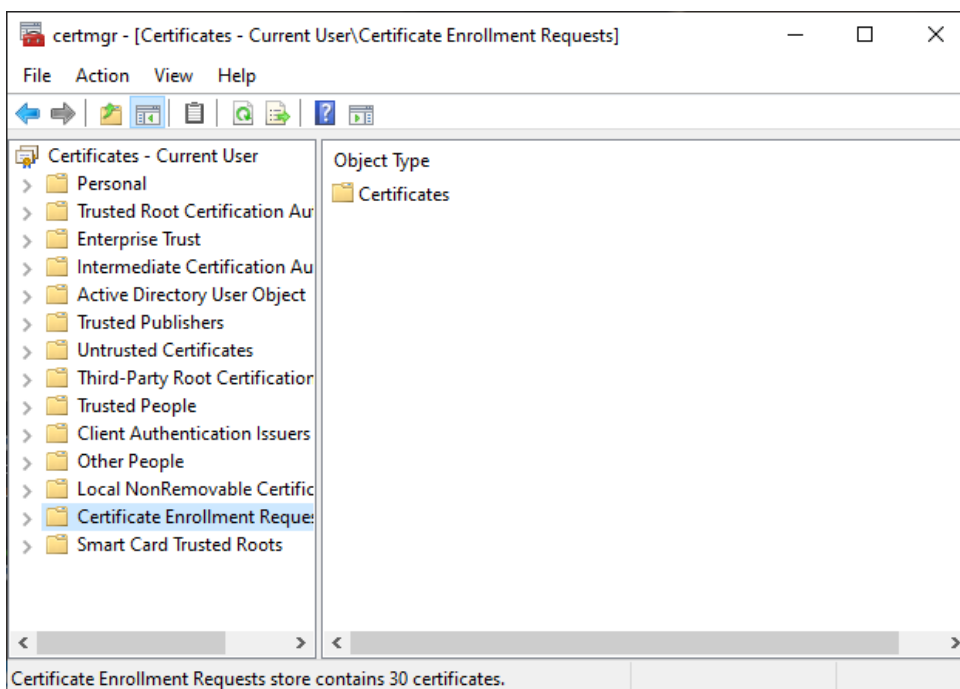


Backup of the private key in Windows 10

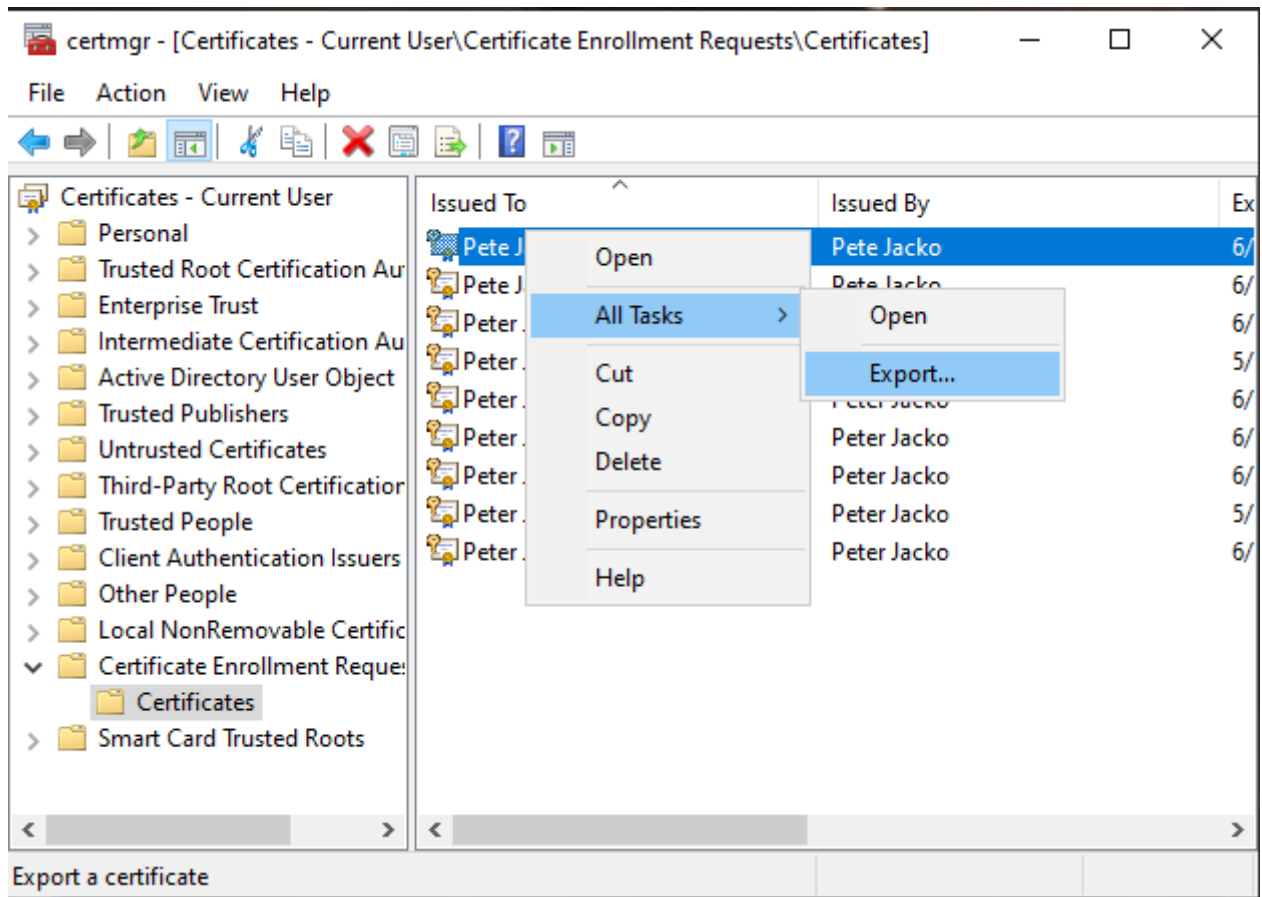
Click on button **Start** or **Magnifying Glass** and write **Certmgr.msc**



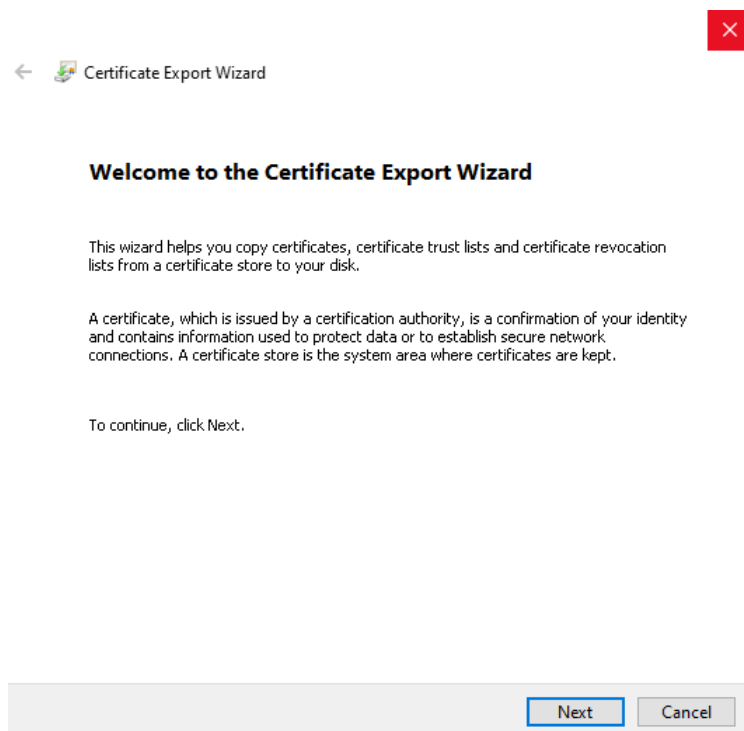
In certmgr click on **Certificate Enrollment Request/Certificates**



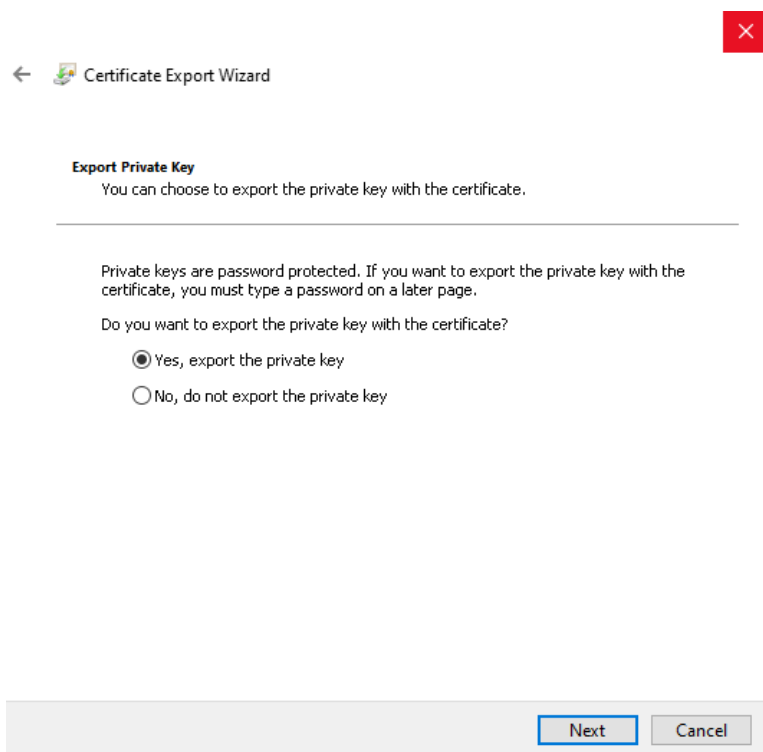
Choose the **private key**, right click it and select **All Tasks/Export**



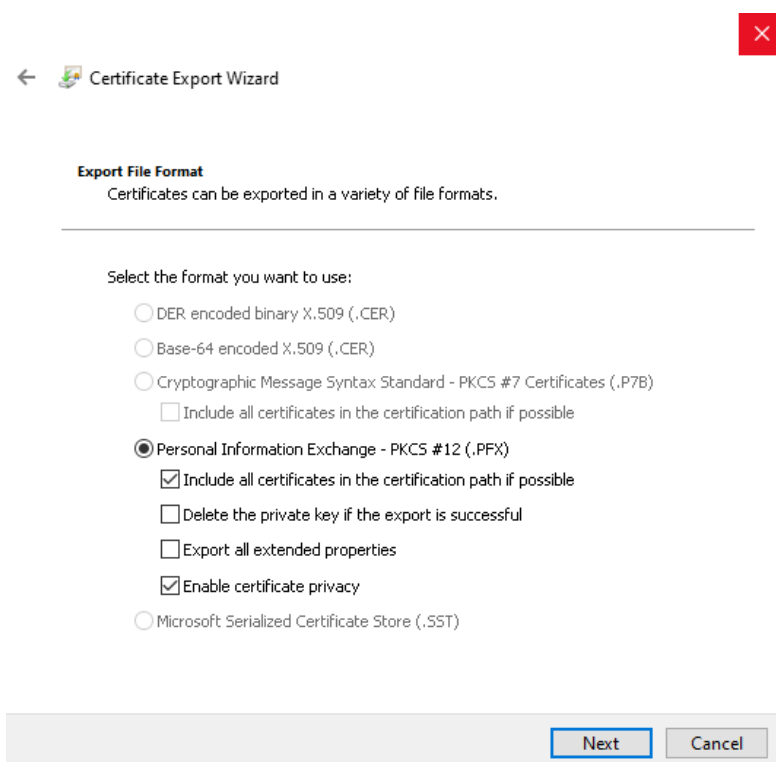
in the **Export wizard** choose **Next**



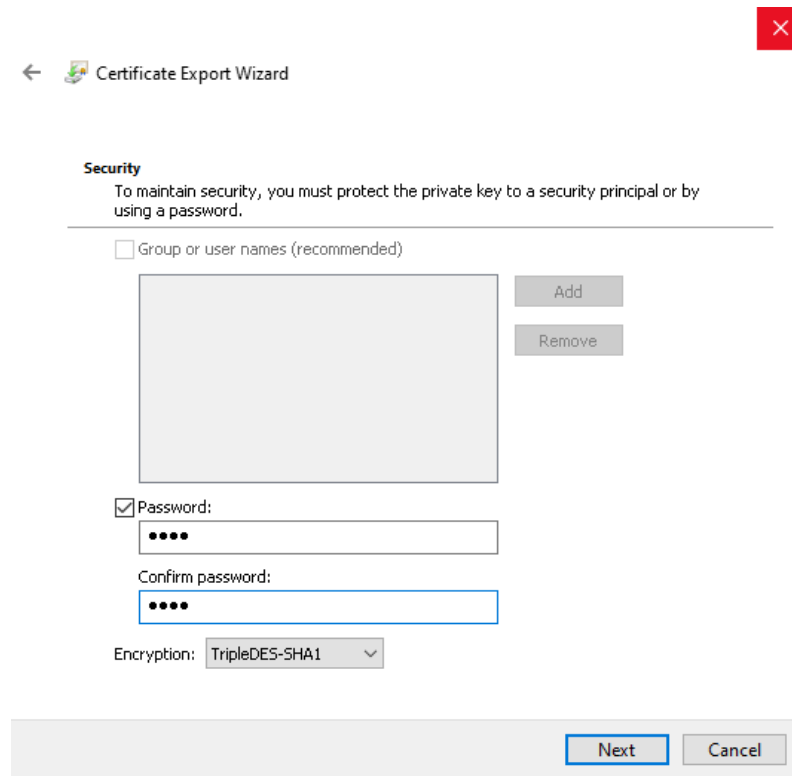
mark option „**Yes, export the private key**“ and then **Next**




leave the current **PKCS #12** format setting



enter **password**, which will protect this backup and select **Next**



←  Certificate Export Wizard ✕

Security
To maintain security, you must protect the private key to a security principal or by using a password.

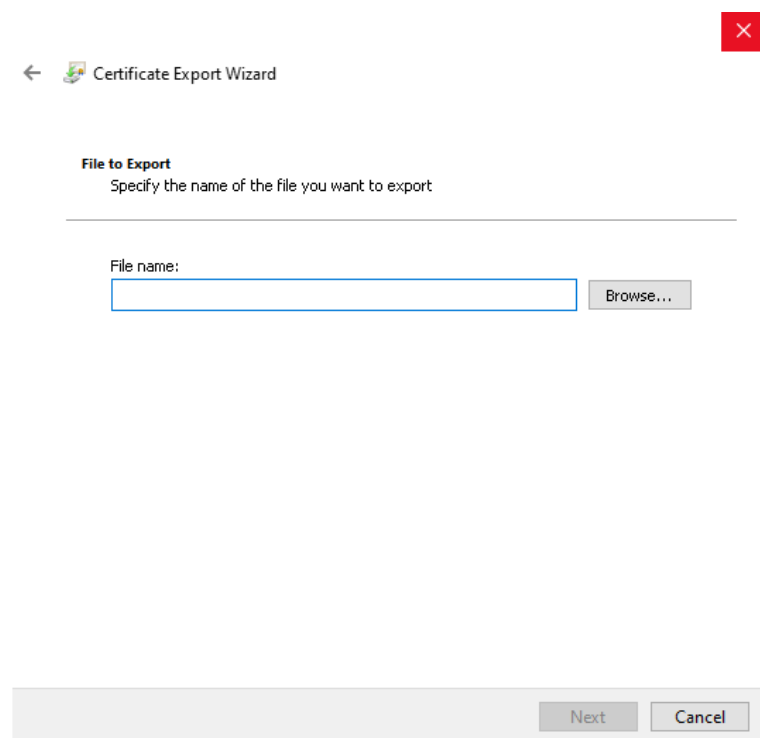
Group or user names (recommended)


Password:

Confirm password:

Encryption:

choose location, where will be your backup stored with option **Browse**

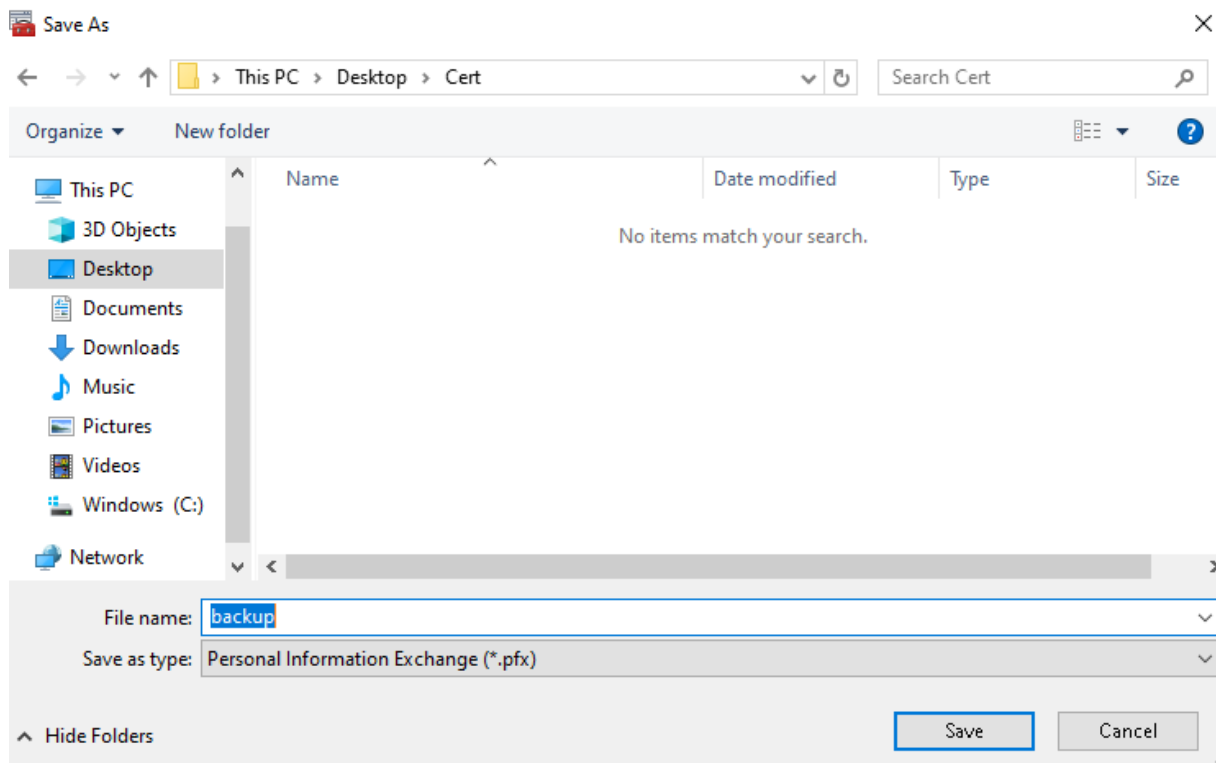


←  Certificate Export Wizard ✕

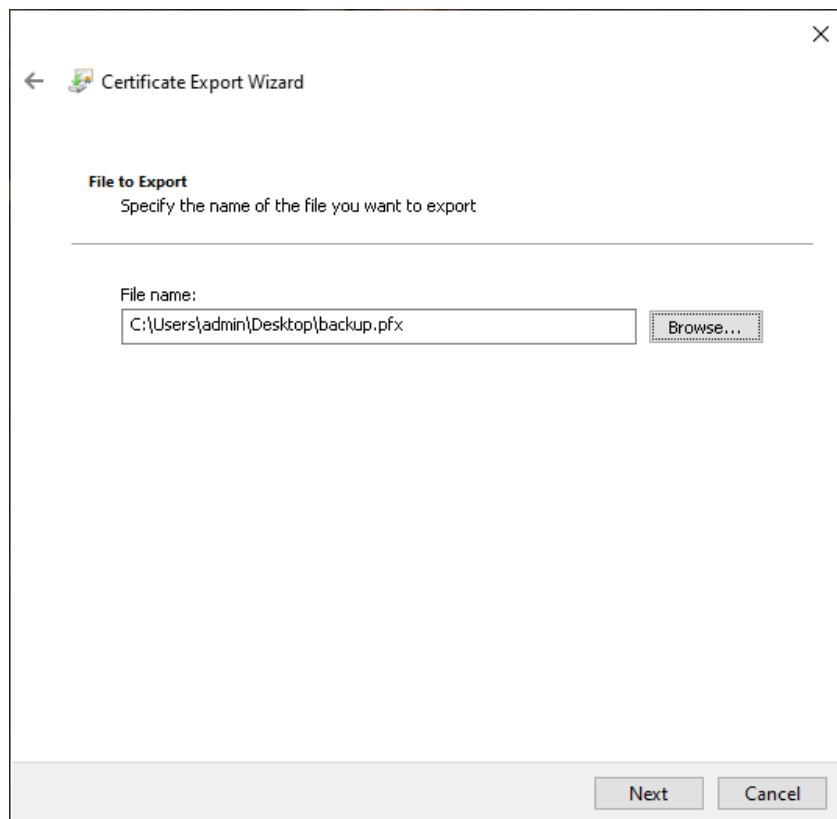
File to Export
Specify the name of the file you want to export

File name:

you can choose to save it on Desktop and then select option **Save**



proceed with button **Next**



for completion choose **Finish**

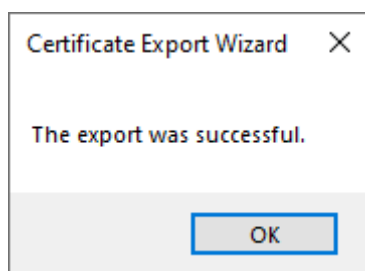
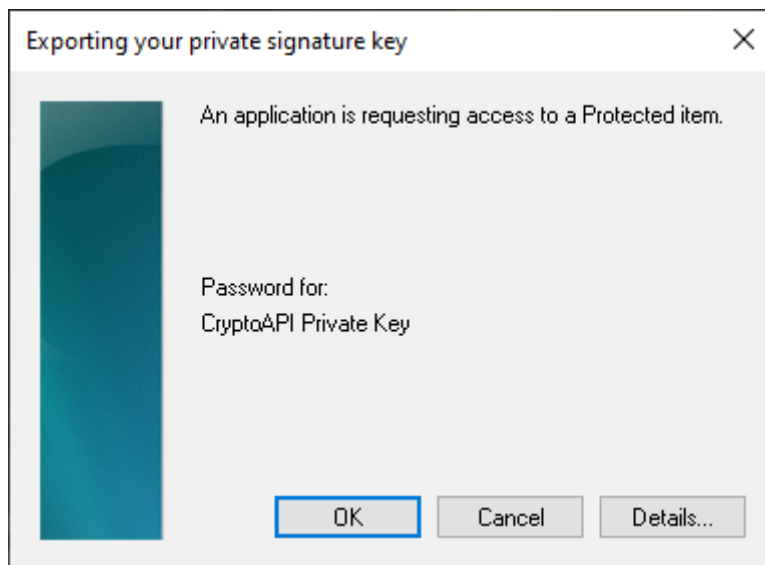
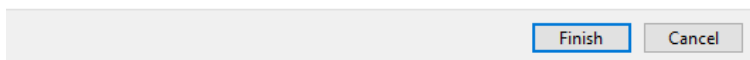


Completing the Certificate Export Wizard

You have successfully completed the Certificate Export wizard.

You have specified the following settings:

File Name	C:\Users\admin\Desktop\Cert\backup.
Export Keys	Yes
Include all certificates in the certification path	Yes
File Format	Personal Information Exchange (*.pfx)



file with backup which contains private key is saved in chosen location.