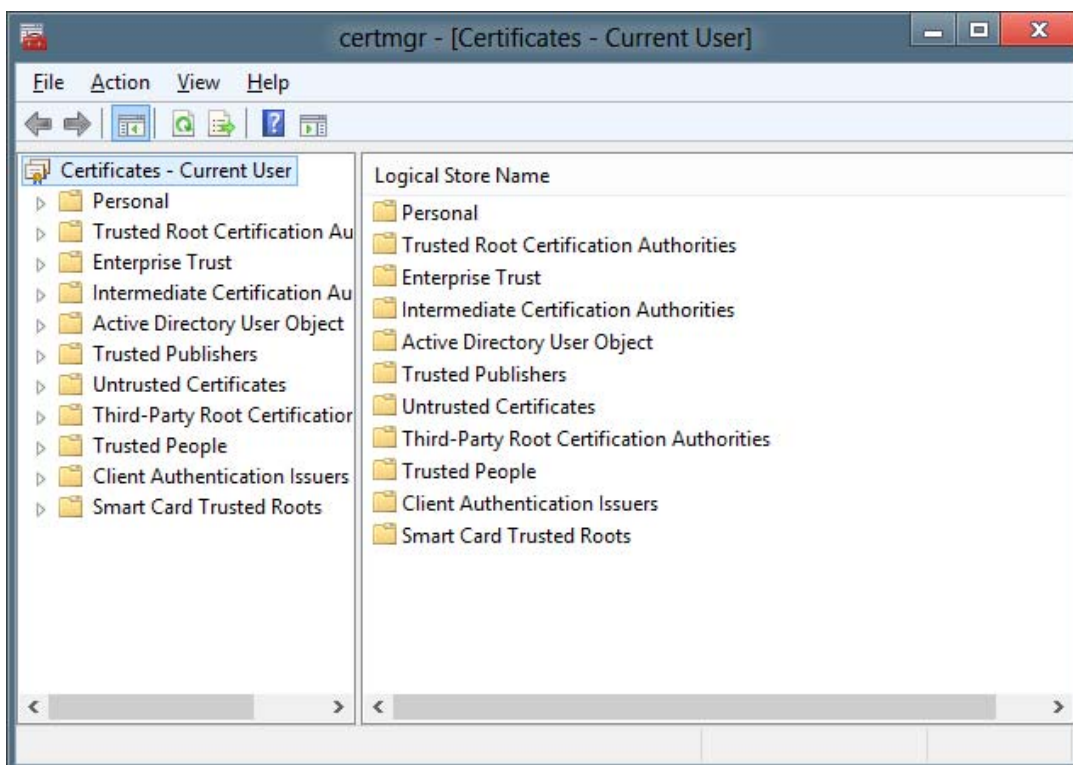
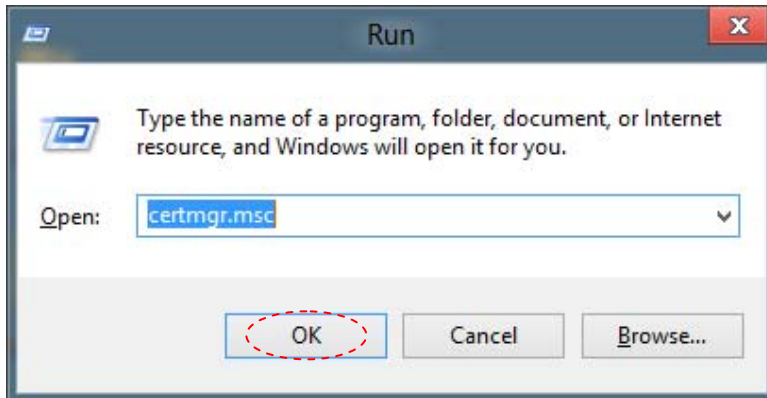


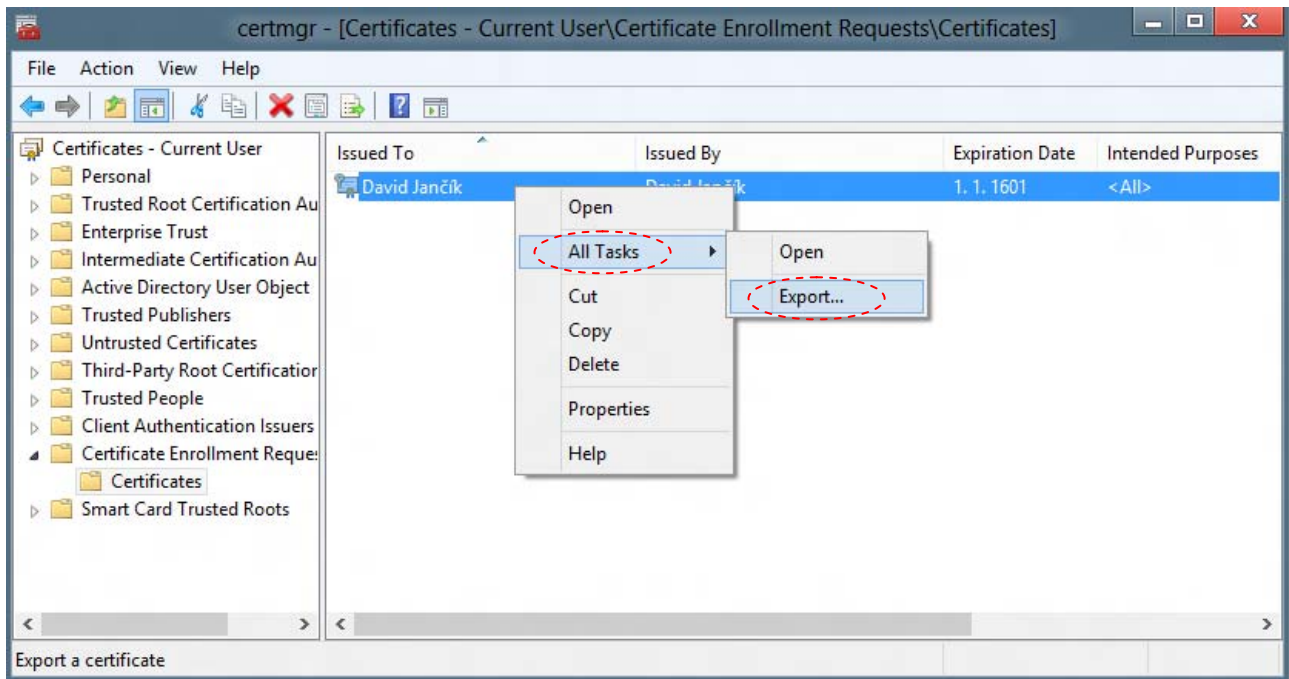
Private Key Backup

The settings for the operating system MS Windows

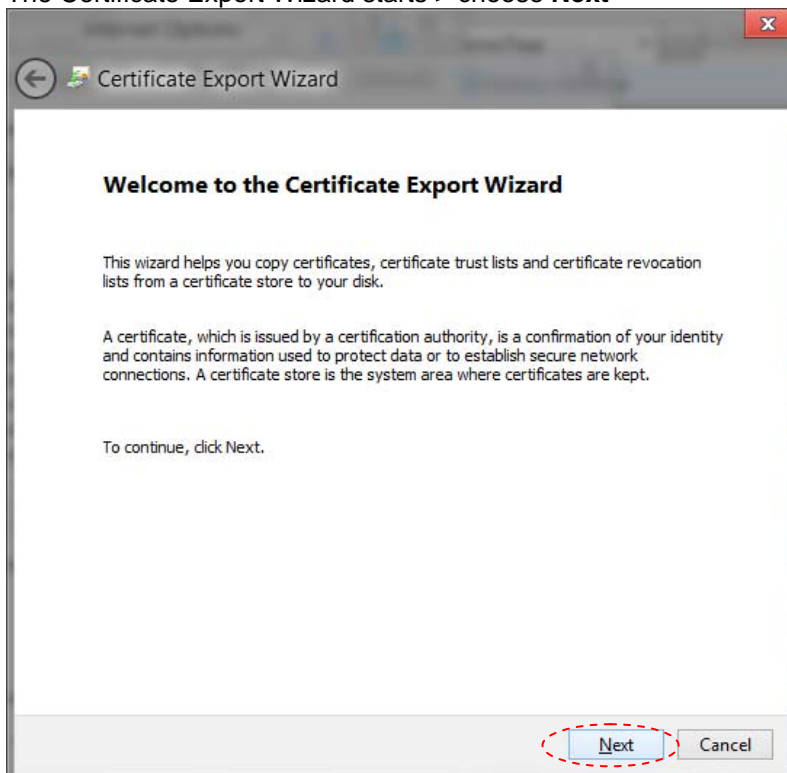
On the START menu > **Run**, type command **certmgr.msc**



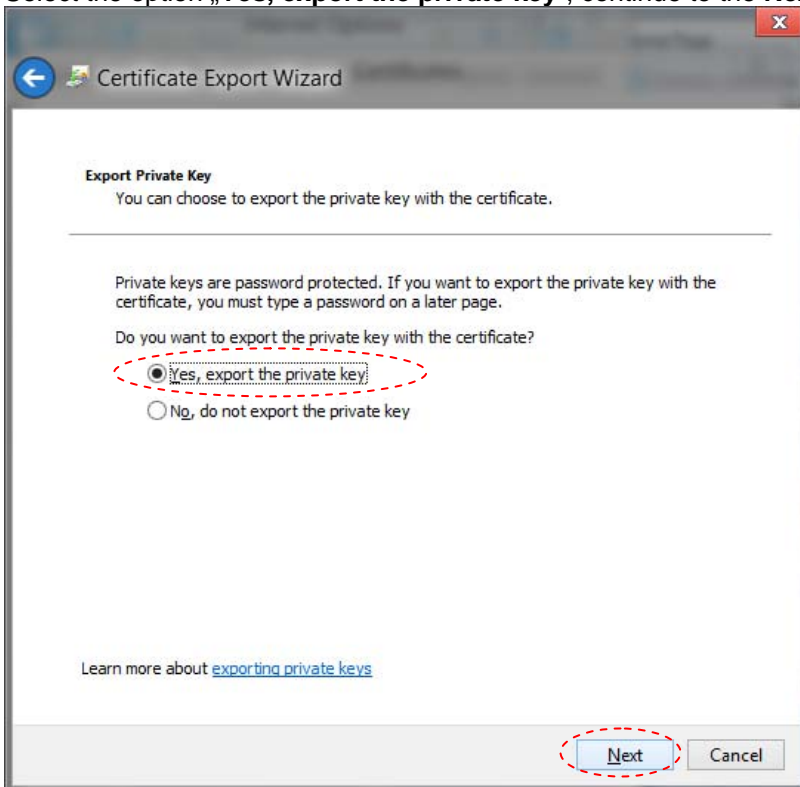
Please choose on the left of the folder **Certificate Enrollment Requests > Certificates**. Choose the certificate to export the private key



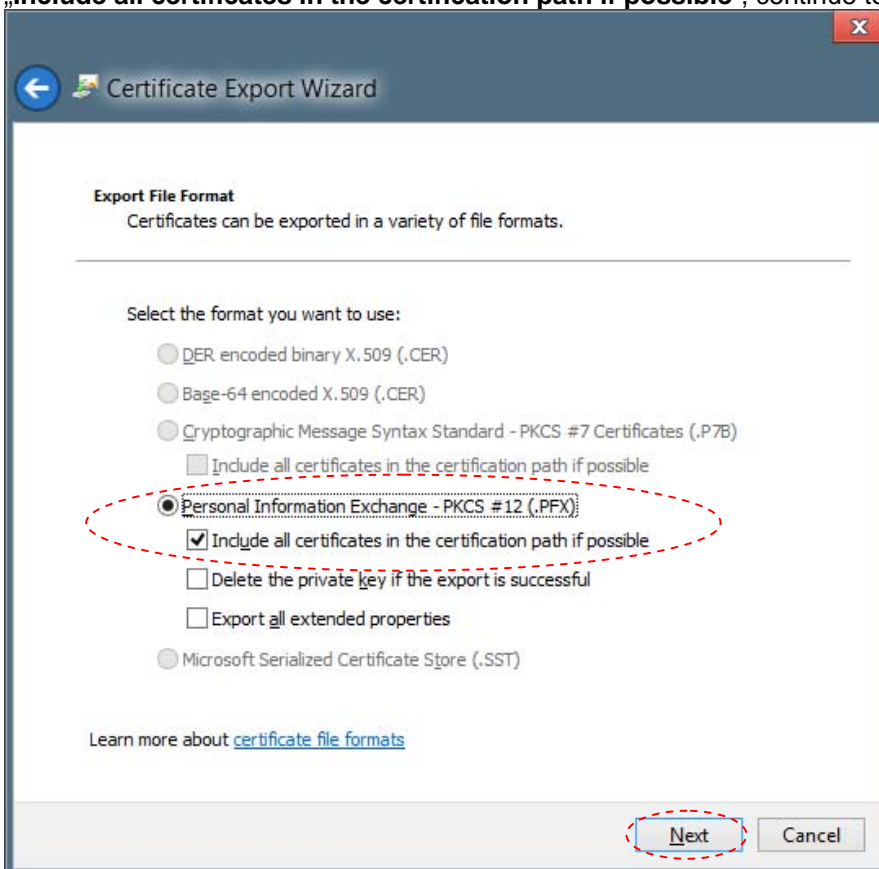
The Certificate Export Wizard starts > choose **Next**



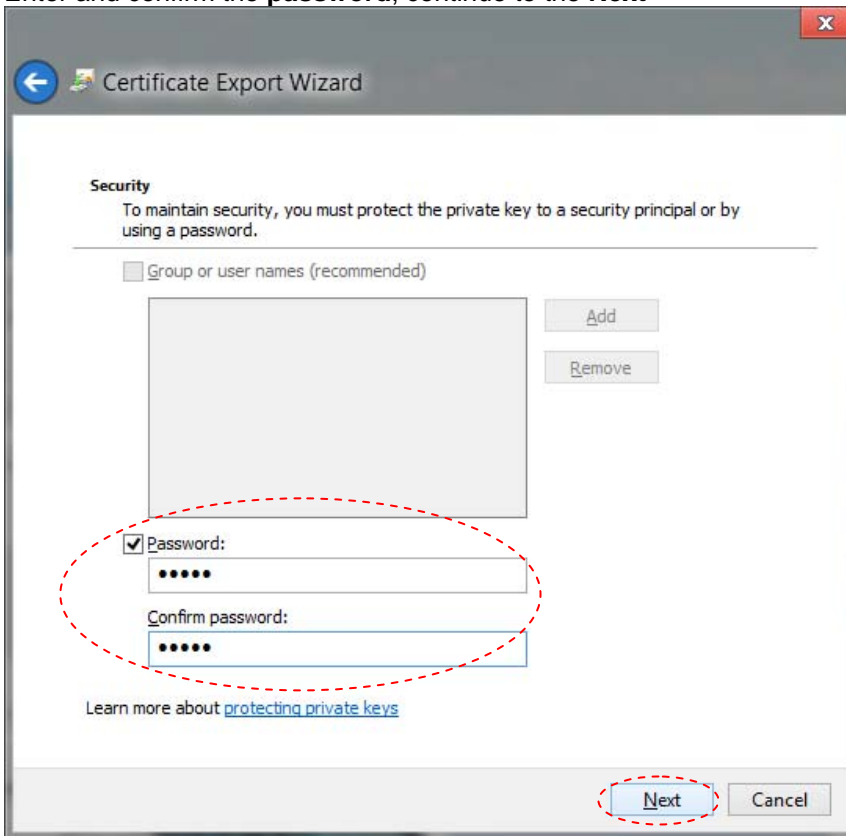
Select the option „Yes, export the private key“, continue to the **Next**



Choose a **format** for exporting „Personal Information Exchange – PKCS #12 (.PFX)“, check option „Include all certificates in the certification path if possible“, continue to the **Next**



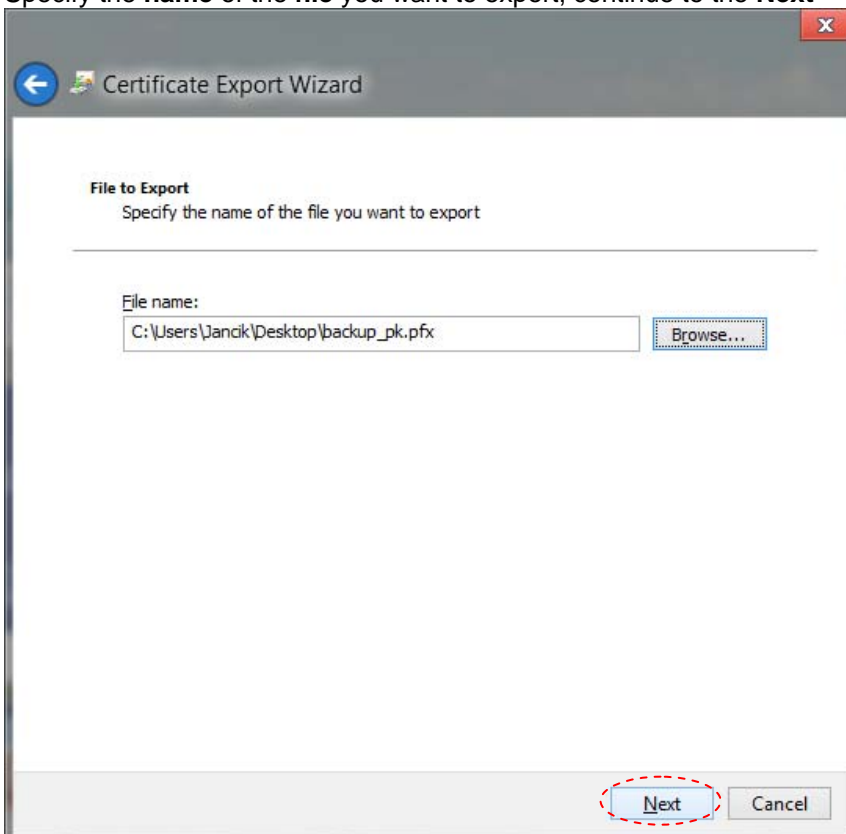
Enter and confirm the **password**, continue to the **Next**



The screenshot shows the 'Security' step of the Certificate Export Wizard. The title bar reads 'Certificate Export Wizard'. Below the title bar, there is a back arrow icon and the text 'Certificate Export Wizard'. The main content area is titled 'Security' and contains the following elements:

- A heading: **Security**
- Instructional text: "To maintain security, you must protect the private key to a security principal or by using a password."
- A checkbox labeled "Group or user names (recommended)" which is currently unchecked.
- A large empty rectangular box for listing group or user names.
- Buttons labeled "Add" and "Remove" to the right of the box.
- A checked checkbox labeled "Password:".
- A text input field for the password, containing six dots.
- A text input field for "Confirm password:", also containing six dots.
- A link: "Learn more about [protecting private keys](#)".
- At the bottom right, there are two buttons: "Next" and "Cancel". The "Next" button is circled with a red dashed line.

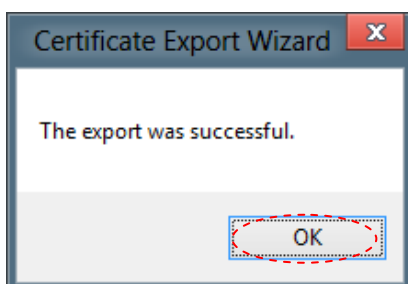
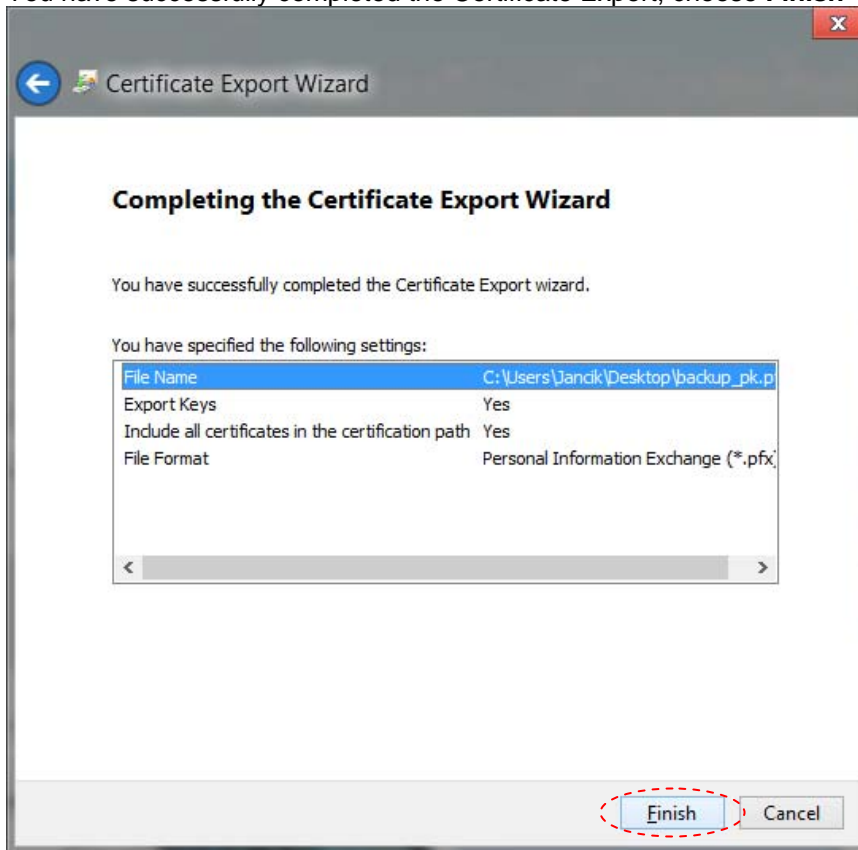
Specify the **name** of the **file** you want to export, continue to the **Next**



The screenshot shows the 'File to Export' step of the Certificate Export Wizard. The title bar reads 'Certificate Export Wizard'. Below the title bar, there is a back arrow icon and the text 'Certificate Export Wizard'. The main content area is titled 'File to Export' and contains the following elements:

- A heading: **File to Export**
- Instructional text: "Specify the name of the file you want to export"
- A horizontal line separator.
- A label: "File name:"
- A text input field containing the file path: "C:\Users\Jandik\Desktop\backup_pk.pfx".
- A button labeled "Browse..." to the right of the input field.
- At the bottom right, there are two buttons: "Next" and "Cancel". The "Next" button is circled with a red dashed line.

You have successfully completed the Certificate Export, choose **Finish**



The exported file to save to a safe location.